

2020

FACE

RECOGNITION

SOLUTION

Alcon solution May. 2020





01

## BACKGROUND

Technical background, product background

02

## SOLUTION FEATURES

Solution structure, product overview

03

## APPLICATION

Application of solutions, typical scenarios

04

## INSTALLATION

Product installation and points of attention

05

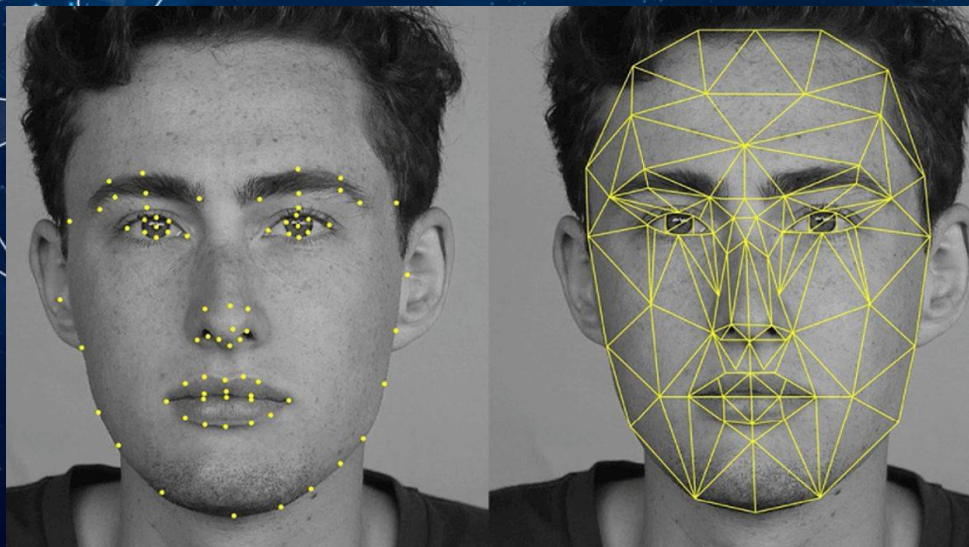
## RELATED SOLUTIONS

Integrated solutions

06

## PRODUCT COMPARISON

Key advantages and key features



01

## BACKGROUND

Technical background, product background

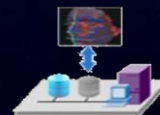
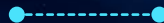
# BACKGROUND

Biometric system is preferred for people identification due to its reliability and accuracy. Face recognition is required more and more in video surveillance system.

With development of Neural Network (NN) technology in AI area, face images could be trained in different distance and angle and face model can be built by algorithm, which improves accuracy and speed of recognition.

Based on deep-learning algorithm face recognition products in Alcon are designed for capture and recognition face in real time.

With a lot of experience in safe-city level projects, Alcon has ability to provide whole solution for our customers.





## BACKGROUND

Alcon face recognition system includes three kinds of working mode: the front-end analysis, back-end analysis and collaborative analysis. With high-speed automatic recognition capability, system is widely used for public security, smart community, access control, attendance, bank VIP customer identification and other practical scenarios application requirements.

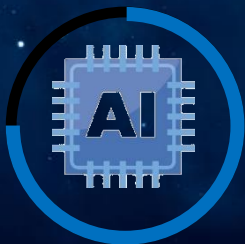


# BACKGROUND

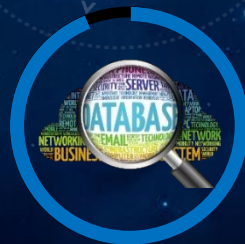


**Strong ability  
to deal with  
data**

- World-class chip manufacturers
- Trained algorithm with enough data
- Open for integration



**AI Algorithm**



**Face library  
with high  
security level**

- Maturing algorithm
- Provide pictures with high quality



**Recognition  
products with  
powerful  
functions**

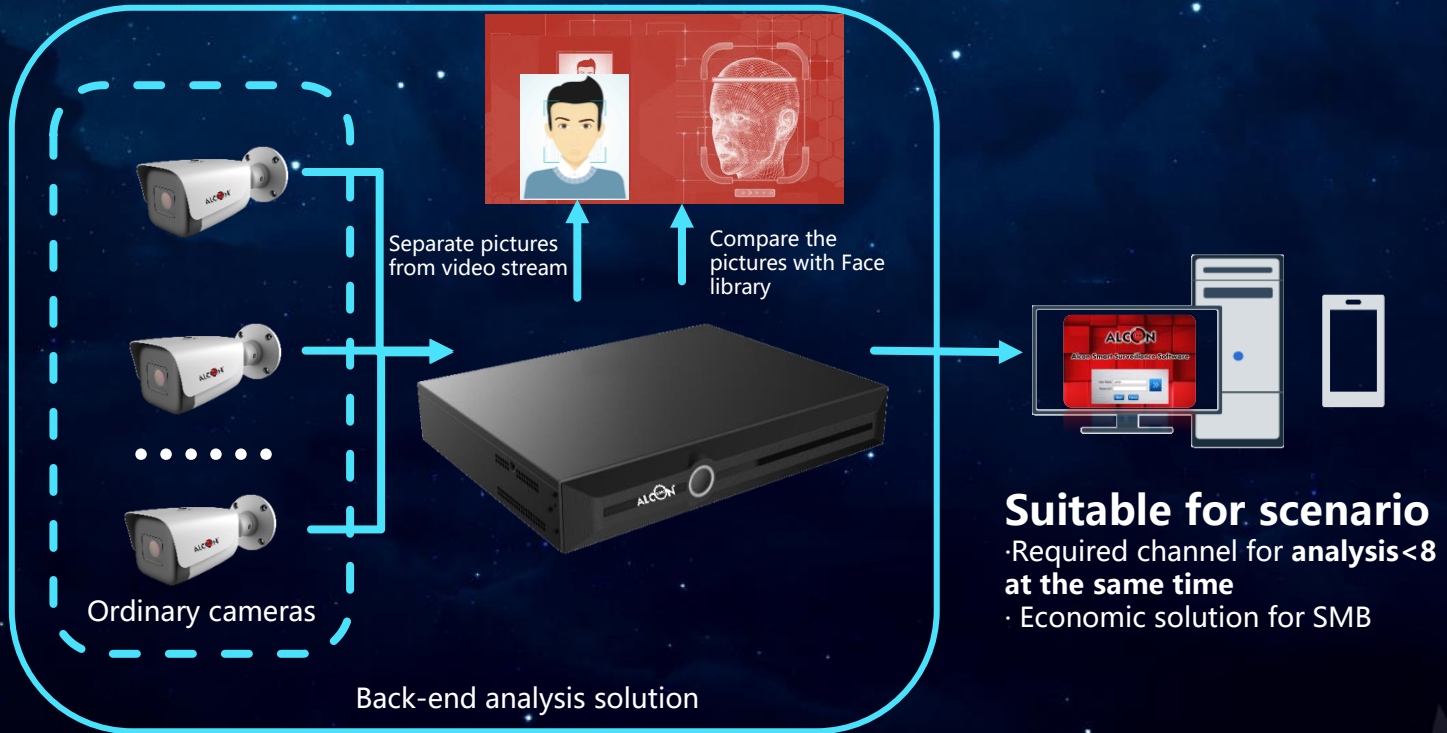


02

## SOLUTION FEATURES

Solution feature, Product overview

# SOLUTION STRUCTURE





### MODEL

AL-NVR5020FR-8DRAID  
AL-NVR5040FR-8DRAID  
AL-NVR5080FR-8DRAID

**32** Bases facial pictures; **10k** facial pictures

Analysis **8-ch video stream, 16-ch picture streams**

Alarm trigger by black/white list

Management face library

### MODEL

AL-NVR5005FR-1D  
AL-NVR5010FR-2D

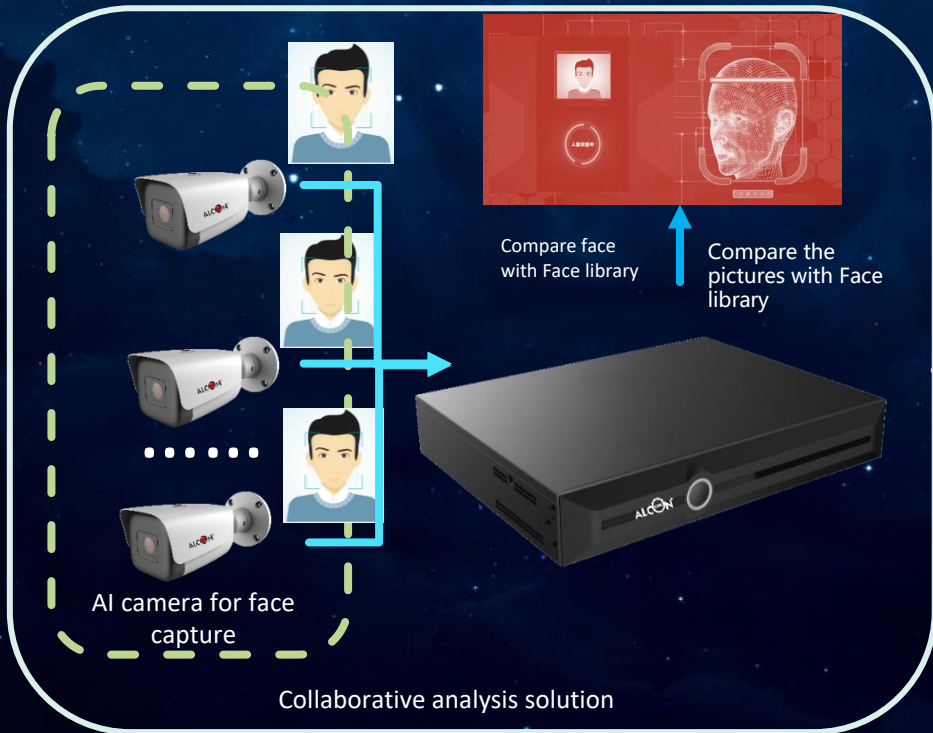
**32** Bases facial pictures; **10k** facial pictures

Analysis **1-ch video stream, 5-ch picture streams**

Alarm trigger by black/white list

Management face library

# SOLUTION STRUCTURE



## Suitable for scenario

- Required channel for analysis < 16 at the same time
- Economic solution for SMB

AI-2MP-Fixed-Capture  
AL-50001-MPC-HD2LRFCDK



AI-2MP-Fixed-Capture  
AL-50002-MPC-HD2LRFCDK

## Face capture models

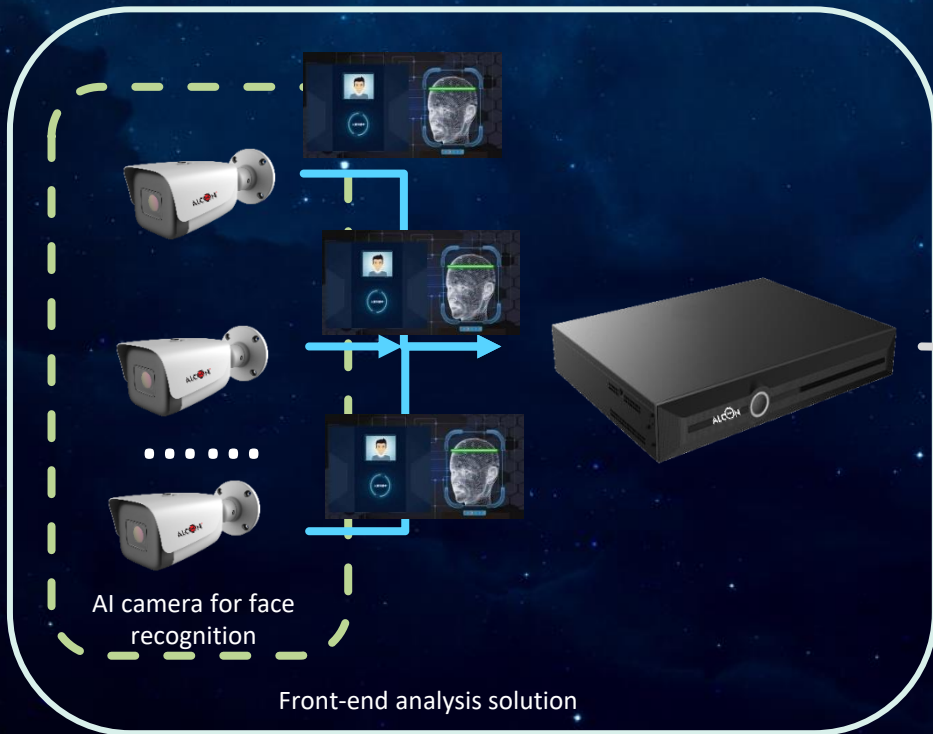
Operation mode: Capture face, intelligent monitoring for optional, default capture face  
Capture quantity: 1 (default), 2, 3 for optional  
**Error rate:  $\leq 0.5\%$**

Face capture accuracy:  $\geq 97\%$  (crowd 10~15 persons)  $\geq 98\%$  (crowd  $\leq 10$  persons)

Min. pixel of face capture: default 80, 19-1920 for optional

**Detect faces at the same time:  $\leq 32$**

# SOLUTION STRUCTURE




## Suitable for scenario

- Required channel for analysis > 16 at the same time
- High ability solution for SMB



### FACE RECOGNITION MODELS



AL-50001-MPC-HD2LRFRDK  
AL-50002-MPC-HD2LRFRDK  
AL-50001-MPC-HD2MVFRUDK  
AL-50002-MPC-HD2MVFRUDK

Face capture, intelligent monitoring for optional

Capture quantity: 1 (default), 2, 3 for optional

**Error rate:  $\leq 0.5\%$**

Face capture accuracy:  $\geq 97\%$  (crowd 10~15 persons)  $\geq 98\%$

(crowd  $\leq 10$  persons)

Min. pixel face: default 80, 19-1920 for optional

Face library: 32

Face picture in Face library: 5000

Face recognition accuracy:  $\geq 95\%$  (ordinary scenario)  $\geq 99.9\%$

(specified scenario)

**Detect face at the same time:  $\leq 32$**



03

## APPLICATION

Application of solutions, typical scenarios

## APPLICATION – Blacklist



AL-50001-MPC-HD2MVFRUDK  
AL-50002-MPC-HD2MVFRUDK  
AL-50002-MPC-HD2LRFRDK  
AL-50001-MPC-HD2LRFRDK  
AL-NVR-500X-FRxx...



In system blacklist can be configured. When people appears in controlled area, alarm will be triggered, then administrator will receive alarm on NVR, computer client and mobile client, so that can stop suspect immediately. (Scenarios: custom, public security, business center, shopping mall, bank school...)



1:N



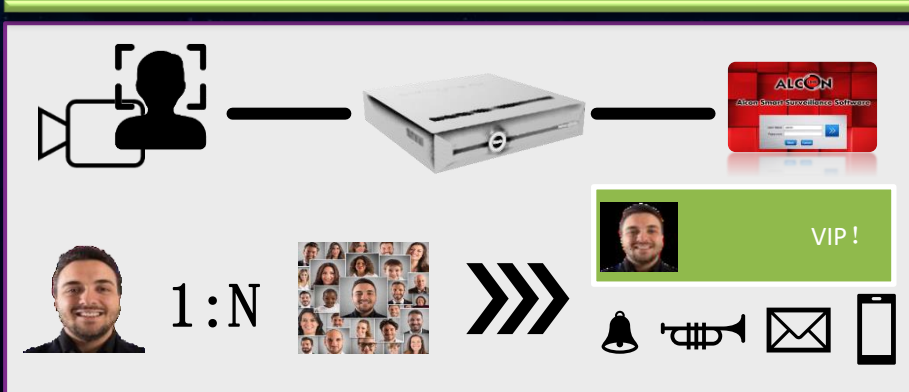
# APPLICATION – VIP clients



- AL-50001-MPC-HD2MVFRUDK
- AL-50002-MPC-HD2MVFRUDK
- AL-50002-MPC-HD2LRFRDK
- AL-50001-MPC-HD2LRFRDK
- AL-NVR-500X-FRxx...



In system whitelist can be configured. When VIP client appears in controlled area, alarm will be triggered, then administrator will receive alarm on NVR, computer client and mobile client, so that user can welcome their VIP and provide service in time. (Scenarios: bank, business center, mall...)





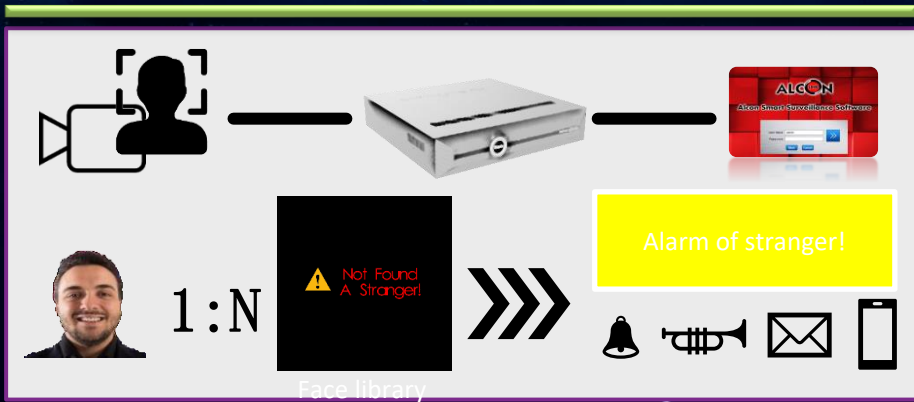
# APPLICATION – Stranger detection



AL-50001-MPC-HD2MVFRUDK  
AL-50002-MPC-HD2MVFRUDK  
AL-50002-MPC-HD2LRFRDK  
AL-50001-MPC-HD2LRFRDK  
AL-NVR-500X-FRxx...



In system whitelist can be configured. When people beyond whitelist appears in controlled area, alarm will be triggered, then administrator will receive alarm on NVR, computer client and mobile client, so that user can take action according to current situation. (Scenarios: business center, school...)



做一个新的视频

# APPLICATION – Alarm of rate



AL-50001-MPC-HD2MVFRUDK  
AL-50002-MPC-HD2MVFRUDK  
AL-50002-MPC-HD2LRFRDK  
AL-50001-MPC-HD2LRFRDK  
AL-NVR-500X-FRxx...



In system whitelist can be configured. When people beyond whitelist appears in controlled area exceeding specific frequency, alarm will be triggered, then administrator will receive alarm on NVR, computer client and mobile client in order to beware of danger early. (Scenarios: public security, bank, business center, mall, school...)



做一个新的视频

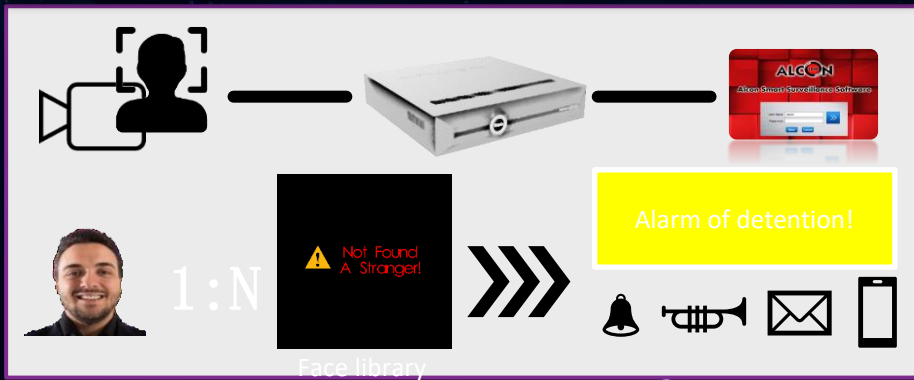
# APPLICATION – Alarm of detention



AL-50001-MPC-HD2MVFRUDK  
 AL-50002-MPC-HD2MVFRUDK  
 AL-50002-MPC-HD2LRFRDK  
 AL-50001-MPC-HD2LRFRDK  
 AL-NVR-500X-FRxx...



In system whitelist can be configured. When people beyond whitelist appears in controlled area exceeding specific time, alarm will be triggered, then administrator will receive alarm on NVR, computer client and mobile client in order to beware of standing sentry. (Scenarios: public security, bank, business center, mall, school...)



做一个新的视频

# APPLICATION – Check-in by face



- AL-50001-MPC-HD2MVFRUDK
- AL-50002-MPC-HD2MVFRUDK
- AL-50002-MPC-HD2LRFRDK
- AL-50001-MPC-HD2LRFRDK
- AL-NVR-500X-FRxx...



In system whitelist can be configured. When people in whitelist appears in controlled area, NVR will record the time of entrance/exit. It can be widely used into office or conference.



	A	B	C	D	E
1	Face Library Name	Name	Attendance Count	03-15	03-16
2	STAFF	Pillar	4	2	2
3	STAFF	Andy	8	6	2
4	STAFF	Alan	12	8	4
5	STAFF	Juana	8	4	4





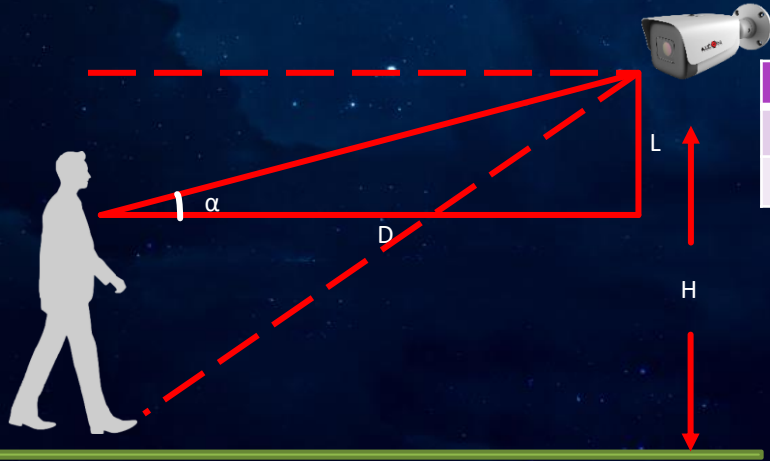


# 04

## INSTALLATION

Product installation and points of attention

# INSTALLATION – Product installation



Width	Focal length	Distance	Height	Angle
2.5m	6mm	5.7m	2.5m	10°
2.5m	12mm	11m	3.5m	10°

- Width of monitoring range should be less 2.5m
- $\alpha < 15^\circ$
- $L = \tan \alpha = H - (\text{Height of person} - \text{Height of head})$
- $H = \tan \alpha * D + 1.5\text{m}$
- 1.5m = Average height of person – Average height of head

# INSTALLATION – Product installation



**Sideways angle**

-40°-40°



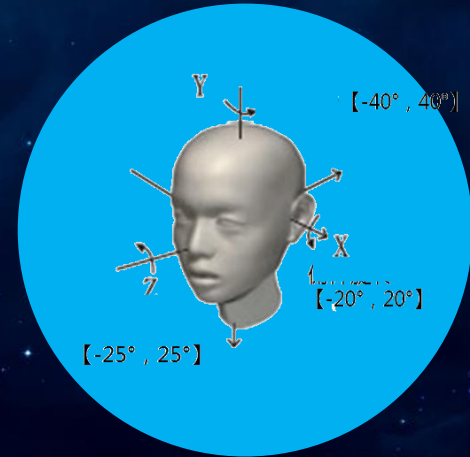
**Tilt angle**

-20°-20°



**Rotation angle**

-25°-25°





05

## RELATED SOLUTIONS

Integrated solutions





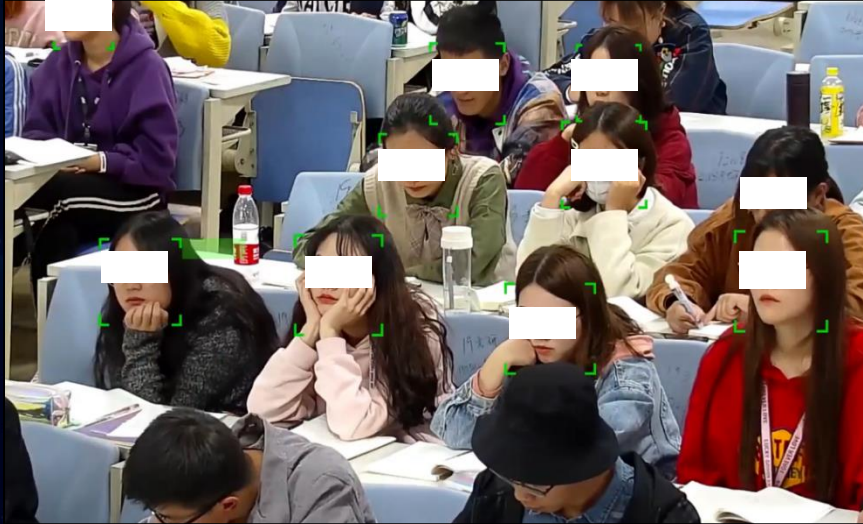
- Integration with turnstiles/barriers
- Control access to industrial park/ building/office
- Check attendance by face recognition

# Face Recognition in office building



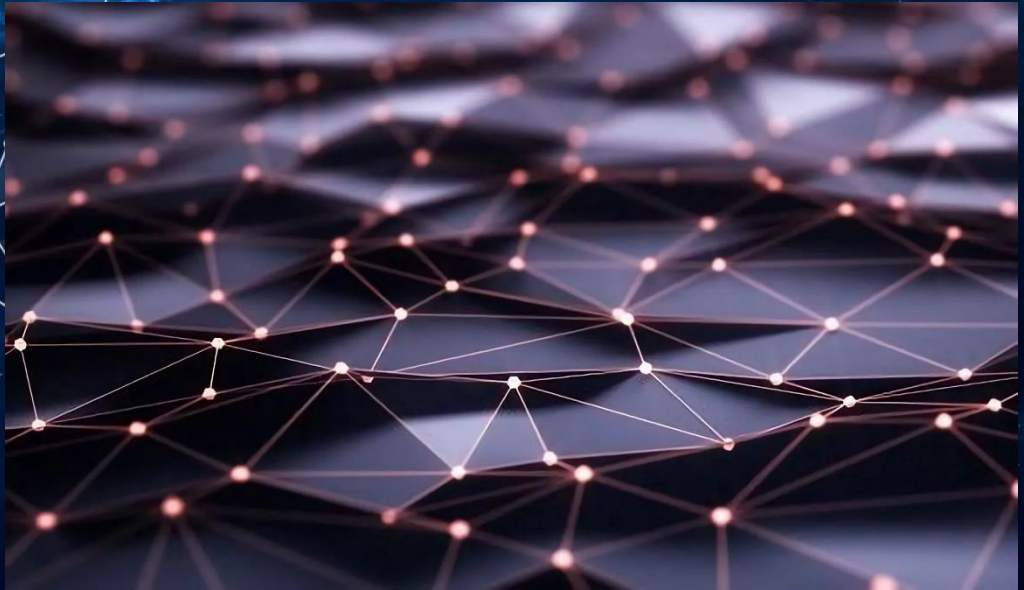
## Face recognition in upscale neighborhood

- Face recognition system integration with system access control.
- Control access to apartment
- Widely be used in upscale neighborhood, prevent strangers outside; double check limits of authority by face recognition



## Face recognition in classroom

- Face recognition system integration with system attendance.
- System Automatically checks attendance during class. Professors don't have to waste time doing roll call.



06

## PRODUCT COMPARISON

Key advantages and key features



## PRODUCT COMPARISON—Key advantages



Alcon



Motorized lens, convenient to adjust focus

Starlight level product, Min. illumination Color: 0.001Lux



Face detection at the same time:  $\leq 32$



Support early warning, efficiently frighten intruders



Power supply: DC12V $\pm$ 20%/PoE; convenient to install; no need to buy extra power supply



Support to recognize face with mask



Hik

Fixed lens

Starlight level product, Min. illumination Color: 0.001Lux

Face detection at the same time:  $\leq 30$

Without warning function

Power supply: DC36V; need to buy specific power supply

Doesn't support to recognize face with mask

## PRODUCT COMPARISON—Key features

# SUPER STARLIGHT

Based on advantage of 7\*24 full color super starlight camera in Alcon, accuracy of face capture and face recognition has been raised a lot.

According to our test in company, compared with normal cameras accuracy of recognition has been raised more than 20%.



## PRODUCT COMPARISON—Key features

	相似度 90.6%	
	相似度 87.6%	
	相似度 91.7%	

# Camouflage detection

Alcon face recognition system supports recognize various facial characteristics. People in mask, sunglasses won't affect accuracy of facial recognition.

# 2020 FACE RECOGNITION SOLUTION

Alcon solution May 2020

**ALCON**  **TM**  
BE SMART, BE SECURE

[sales@alconlink.com](mailto:sales@alconlink.com) | [support@alconlink.com](mailto:support@alconlink.com)  
[www.alconlink.com](http://www.alconlink.com)